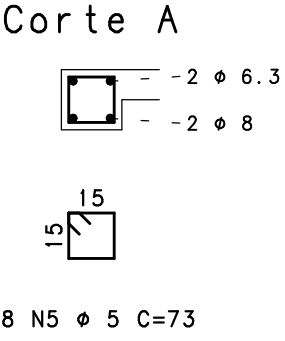
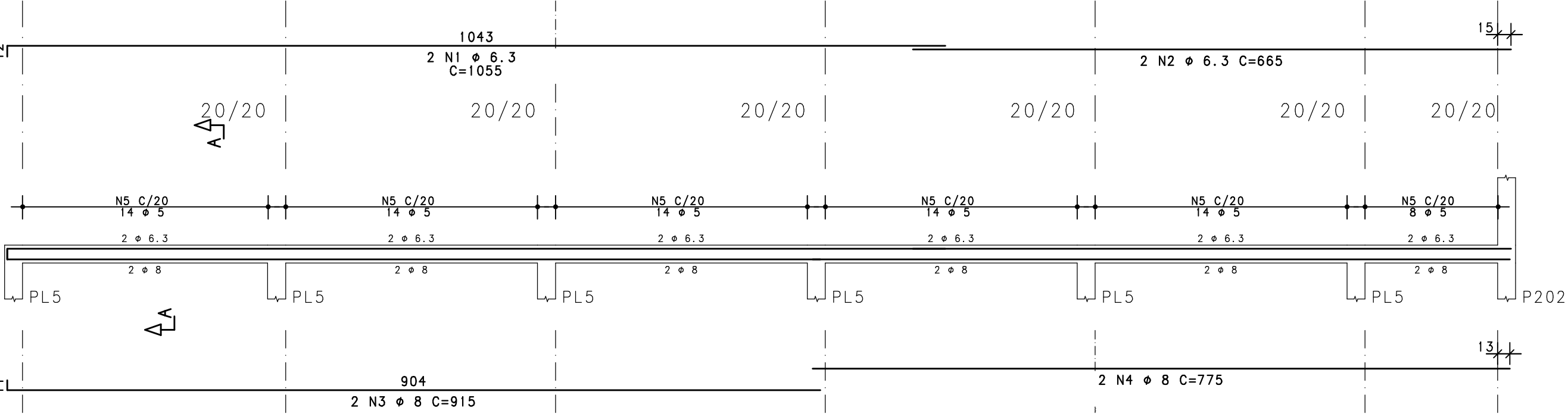
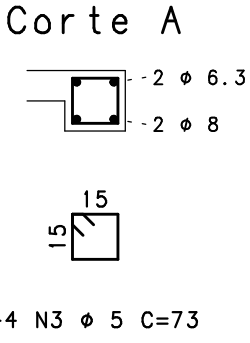
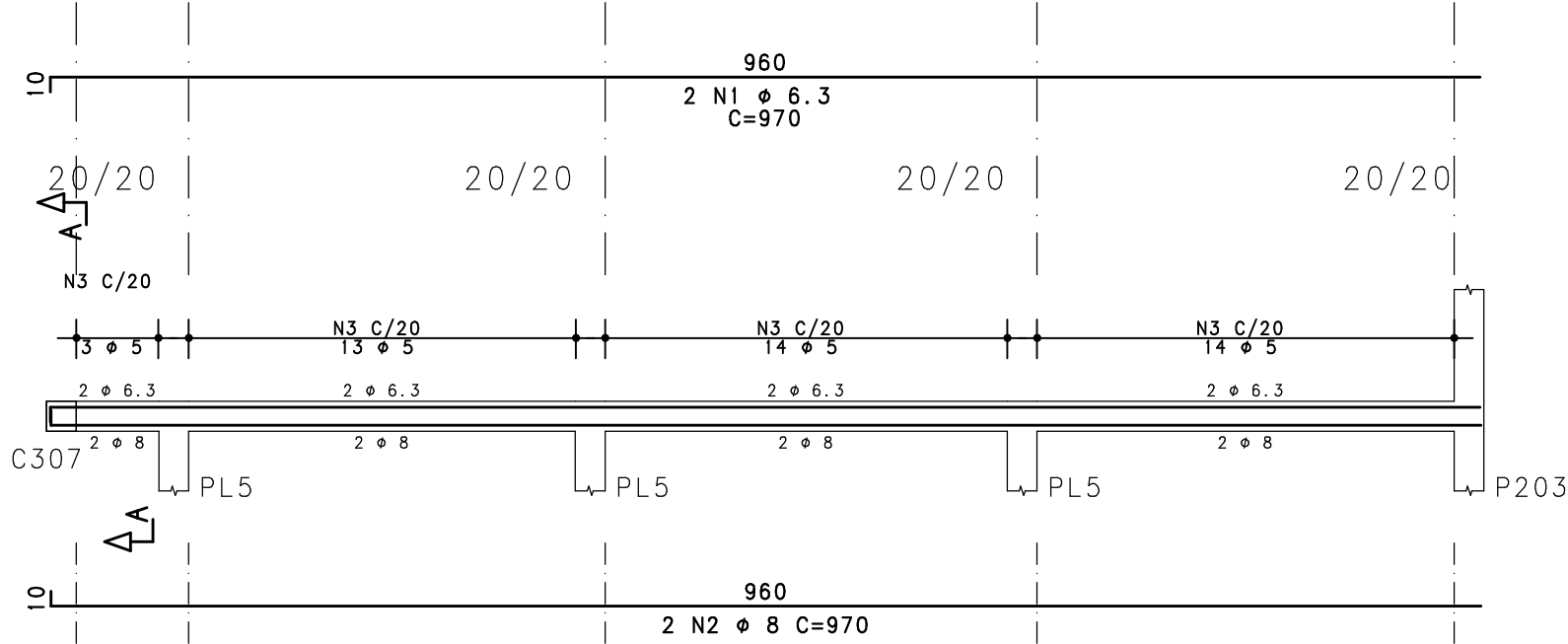


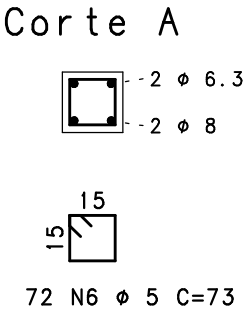
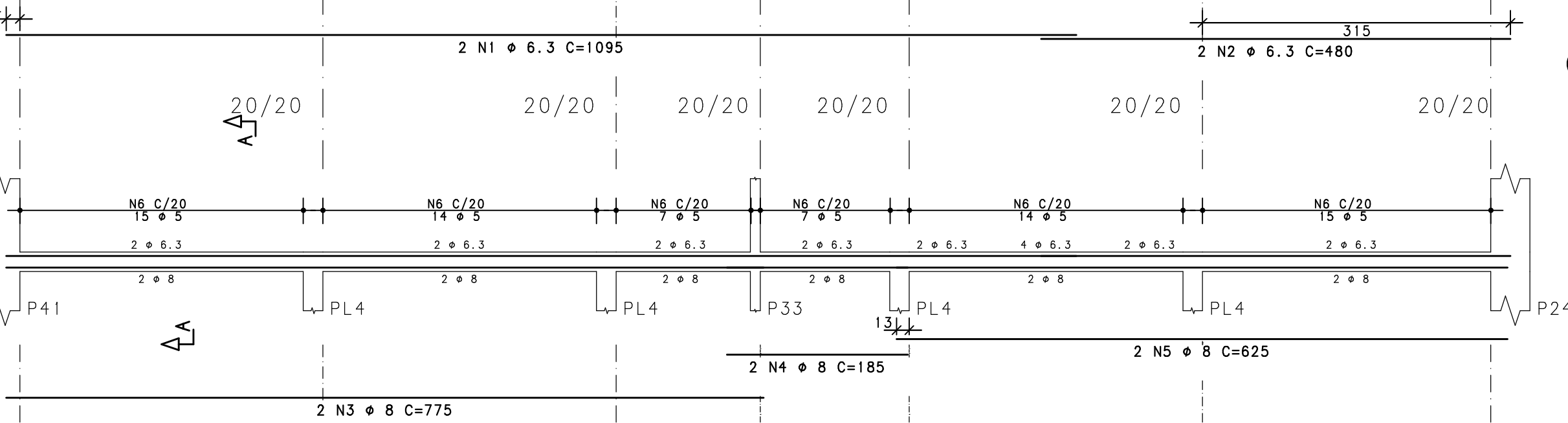
C308



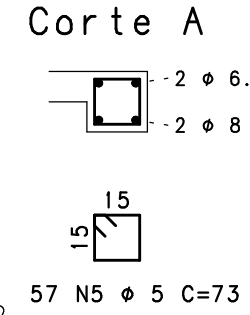
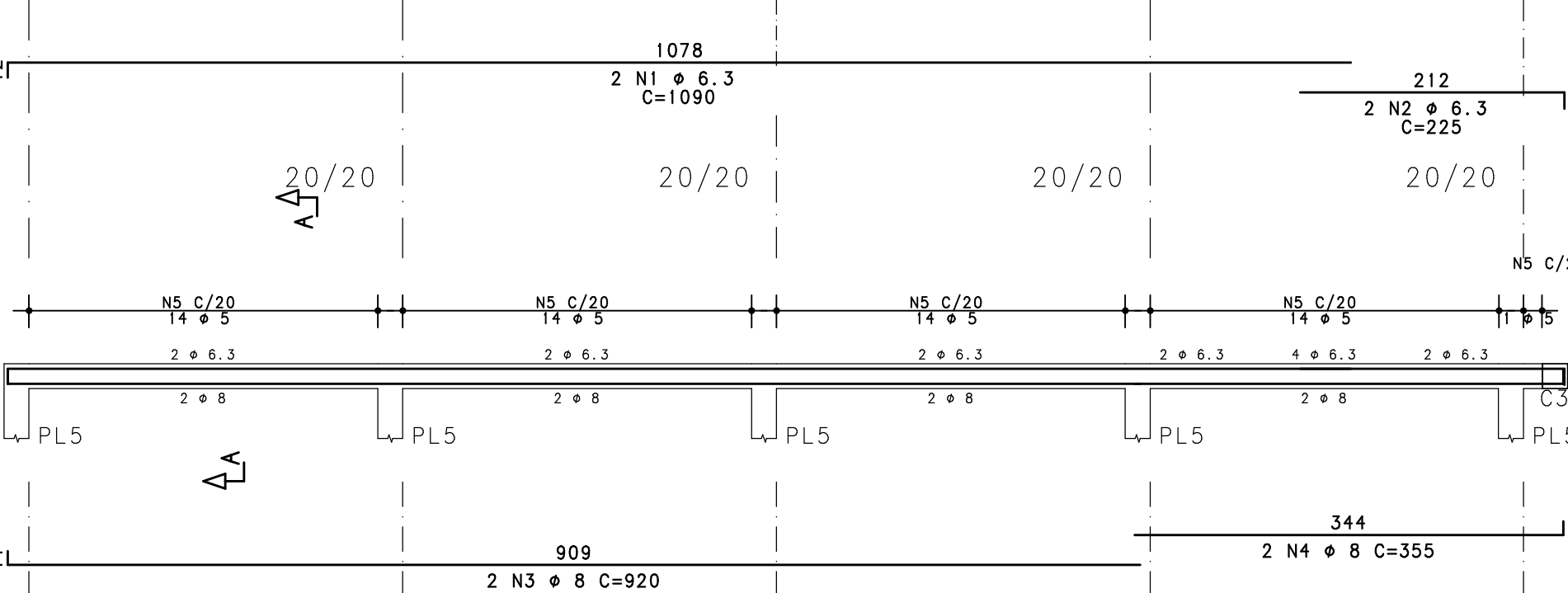
C303



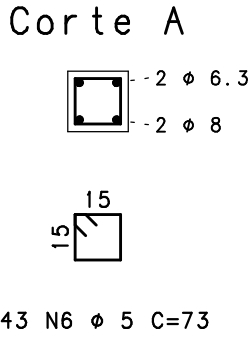
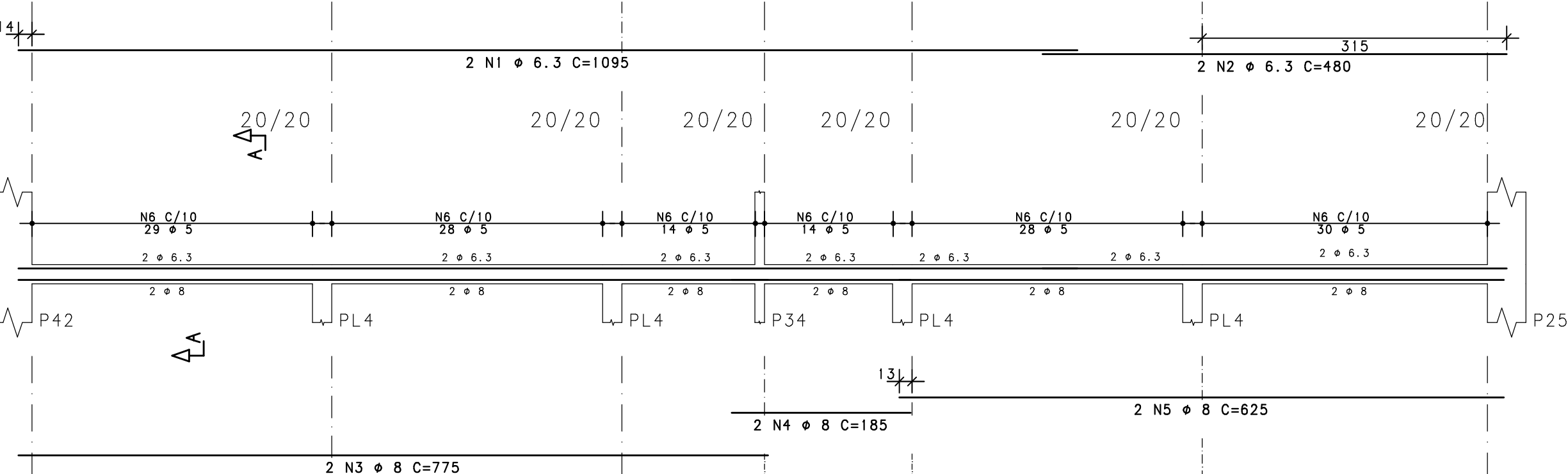
C309



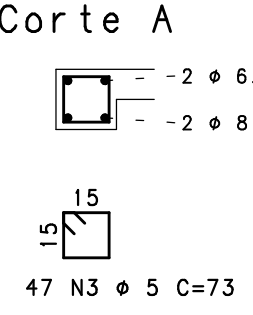
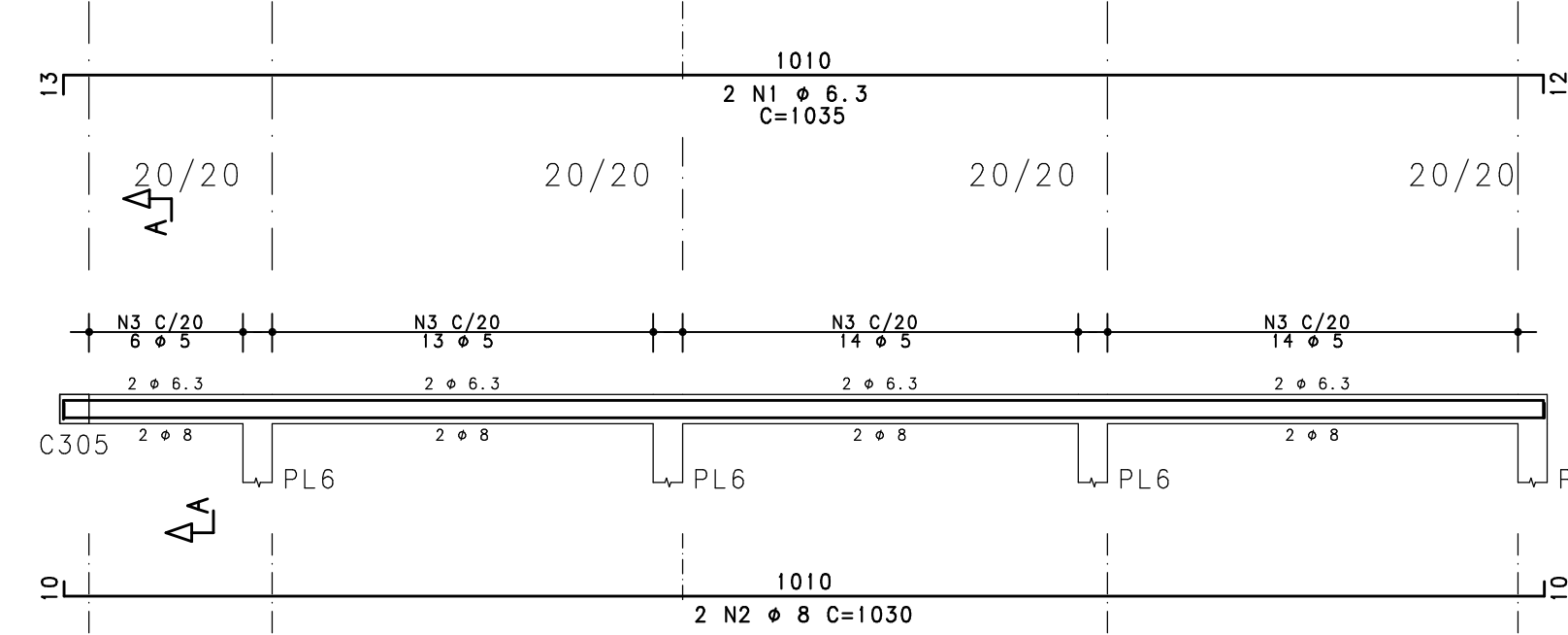
C312



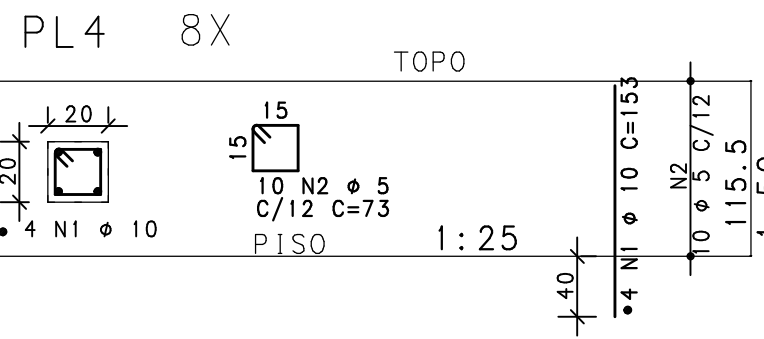
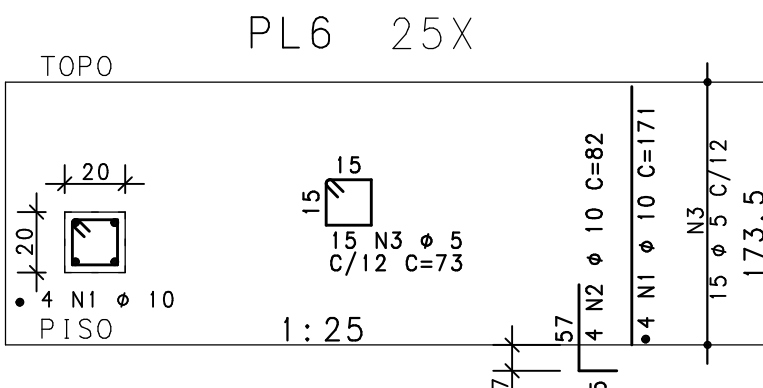
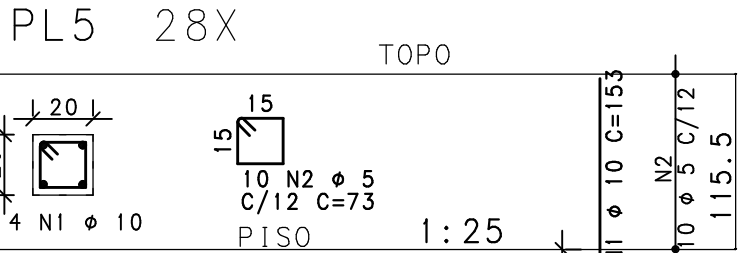
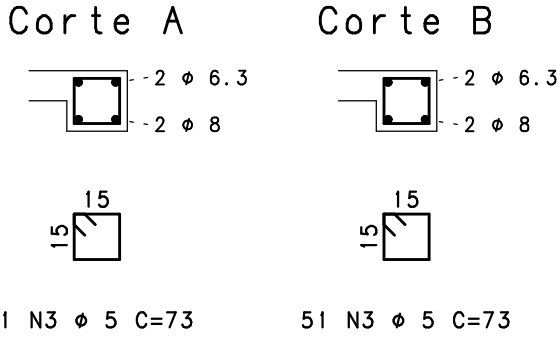
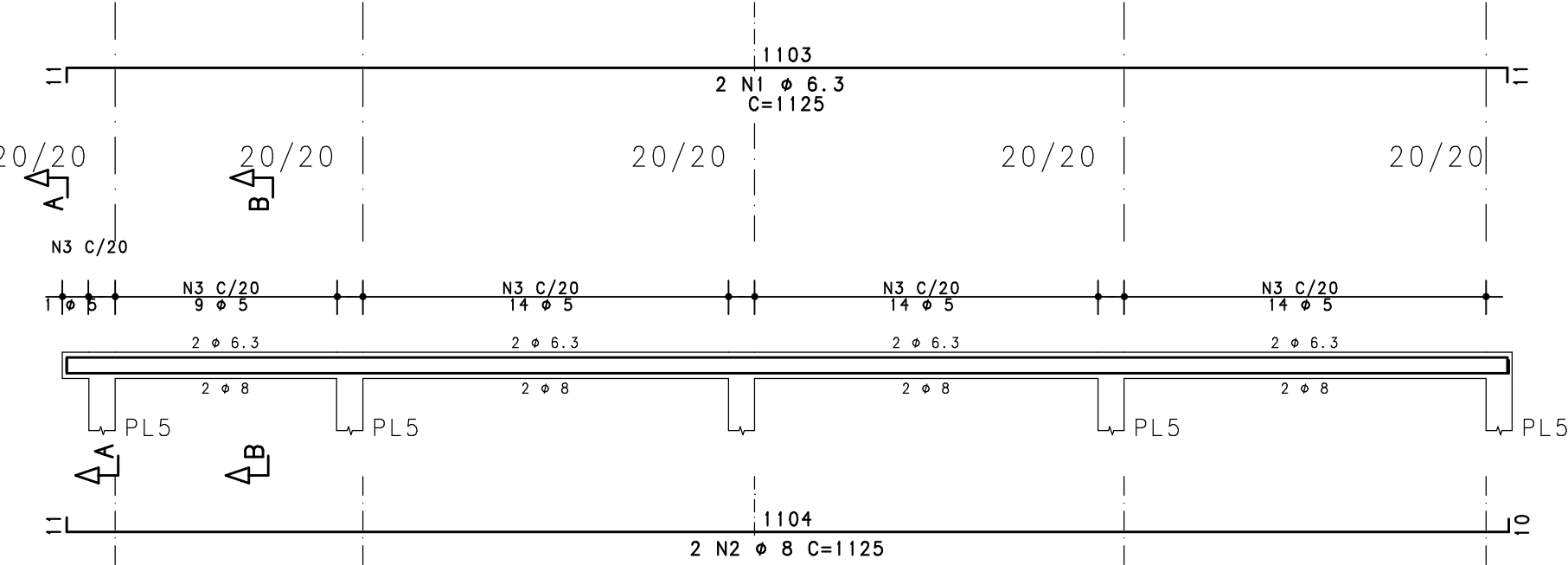
C310



C304



C311



	AÇO	POS	BIT	QUANT	COMPRIMENTO	
					UNIT	TOTAL
			mm		cm	cm
C303	50A	1	6.3	2	970	1940
	50A	2	8	2	970	1940
	60A	3	5	44	73	3212
C304	50A	1	6.3	2	1035	2070
	50A	2	8	2	1030	2060
	60A	3	5	47	73	3431
C308	50A	1	6.3	2	1055	2110
	50A	2	6.3	2	665	1330
	50A	3	8	2	915	1830
	50A	4	8	2	775	1550
	60A	5	5	78	73	5694
C309	50A	1	6.3	2	1095	2190
	50A	2	6.3	2	480	960
	50A	3	8	2	775	1550
	50A	4	8	2	185	370
	50A	5	8	2	625	1250
C310	60A	6	5	72	73	5256
	50A	1	6.3	2	1095	2190
	50A	2	6.3	2	480	960
	50A	3	8	2	775	1550
	50A	4	8	2	185	370
C311	50A	5	8	2	625	1250
	60A	6	5	143	73	10439
	50A	1	6.3	2	1125	2250
	50A	2	8	2	1125	2250
	60A	3	5	52	73	3796
C312	50A	1	6.3	2	1090	2180
	50A	2	6.3	2	455	910
	50A	3	8	2	920	1840
	50A	4	8	2	355	710
	60A	5	5	57	73	4161
PL4	(X8)	50A	1	10	32	153
	60A	2	5	80	73	4896
	60A	1	10	32	153	5840
PL5	(X28)	50A	1	10	112	73
	60A	2	5	280	153	17136
	60A	1	10	112	73	20440
PL6	(X25)	50A	1	10	100	171
	50A	2	10	100	82	8200
	60A	3	5	375	73	27373

RESUMO DE AÇO			
ACO	BIT	COMPR	PESO
	mm	m	kgf
60A	6.3	896	138
50A	8	186	46
50A	8	185	73
50A	10	473	292
Peso Total		60A =	138 kgf
Peso Total		50A =	411 kgf

EXE	00	PROJETO EXECUTIVO - LICITAÇÃO OBRA	EFICÁCIA	31/07/20
REVCOMP	02	REVISÃO PROJETO EXECUTIVO - REF EXE 2	EFICÁCIA	24/07/20
REVCOMP	01	REVISÃO PROJETO EXECUTIVO - REF EXE	EFICÁCIA	03/07/20
REVCOMP	00	EMISSION INICIAL EXECUTIVO	EFICÁCIA	25/04/20
ANT	01	REVISÃO ANTEPROJETO	EFICÁCIA	20/02/20
ANT	00	EMISSION INICIAL ANTEPROJETO	EFICÁCIA	21/11/19
TIPO	REV	DESCRIÇÃO	DESENHO	DATA

REVISÕES			
MINISTÉRIO PÚBLICO DO ESTADO DE MINAS GERAIS SEDE DAS PROMOTORIAS DE JUSTIÇA DE JUIZ DE FORA			
ENDEREÇO: RUA JOSÉ CALIL AHOAGI, LOTE F, BAIXADA DO PARAIBUNA		ÁREA TERRENO: 2.996,30m2	
PROPRIETÁRIO:		ÁREA CONSTRUÍDA: 7.266,36m2	
PROCURADORIA GERAL DE JUSTIÇA DO ESTADO DE MINAS GERAIS		CNPJ: 20.971.057/0001-45	
PROJETO DE ESTRUTURA DE CONCRETO ARMADO			
EMPRESA: ENGENHEIRO FABRÍCIO SILVA LIMA CREA: 80.082/D-MG EFICÁCIA PROJETOS E CONSULTORIA LTDA		CNPJ: 06.301.115/0001-00	
RESPONSÁVEL TÉCNICO: NELSON URIAS PINTO GARIGLIO DA SILVA		CREA: 82.624/D-MG	
CONTEÚDO: VERGA E CONTRAVERGA 3o AO 6o PAVIMENTO - 02/03		DATA: 31/07/20	FOLHA: 116/126
		ESCALA: INDICADA	